

The Vulcan Deflection Transducer

The highest quality deflection transducer for on-board weighing applications.

The Vulcan Deflection Transducer can be installed on several types of truck and trailer suspension components including: steel walking beams, front axles, and thru-trunnions including Mack camel back suspensions. The transducers mount directly on suspension components, measure the component deflection, and convert the deflection into a corresponding weight. Deflection transducers can also be placed on load carrying members to provide solutions for other on-board weighing and custom applications.



KEY FEATURES AND BENEFITS:

- Easy to install - mounts on vehicle suspension components or load carrying members
- Easy to operate using proven Vulcan electronics
- Eliminate overweight fines
- Monitor loading or unloading weights at remote locations
- Save time loading, weighing and adjusting the load
- Reduce time and mileage by minimizing trips to a commercial scale
- Reduce maintenance costs by not overloading the vehicle
- Prevent hauling freight in excess of contracted weight
- INCREASE YOUR PROFIT BY MAXIMIZING EVERY LOAD

**QUALITY, DEPENDABILITY, SIMPLICITY FROM
THE WORLD LEADER IN ON-BOARD SCALES**



DEFLECTION TRANSDUCER

DEFLECTION TRANSDUCER
FOR ON-BOARD WEIGHING
APPLICATIONS

UNITED STATES

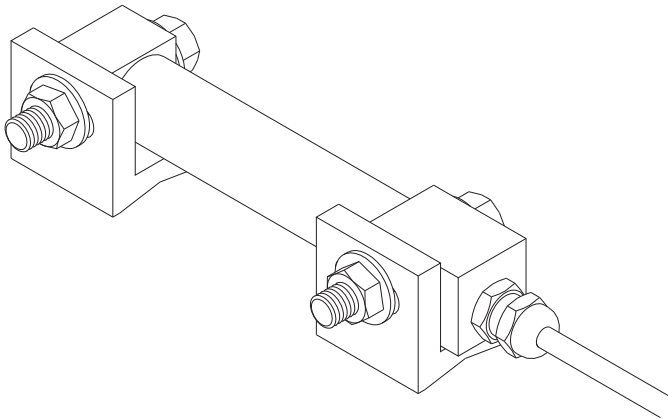
STRESS-TEK, INC.
5920 SOUTH 194th STREET
KENT WASHINGTON 98032
PHONE: 253 872-1910
800 237-0022
FAX: 253 872-9626
EMAIL : info@vulcanscales.com
www.vulcanscales.com

CANADA

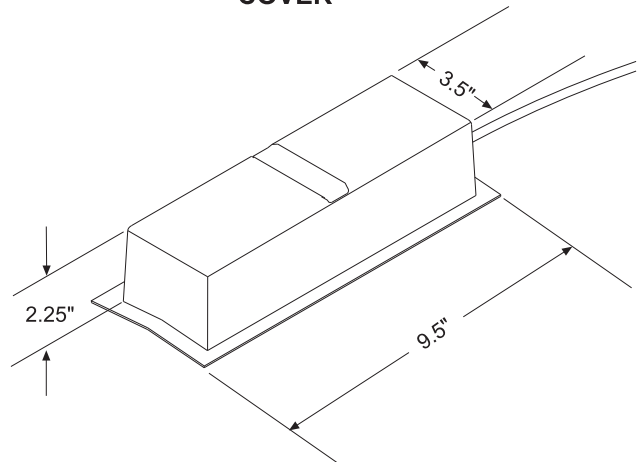
STRESS-TEK, INC.
UNIT #11
1642 LANGAN AVENUE
PORT COQUITLAM B.C.
V3C 1K5
PHONE: 800 663-0854

DEFLECTION TRANSDUCER

**DEFLECTION TRANSDUCER
AND MOUNTING HARDWARE**



**DEFLECTION TRANSDUCER
COVER**



A typical system includes one deflection transducer on the front axle, and two on the rear suspension components

SPECIFICATION:

ACCURACY: System accuracy typically 1-3% of GVW depending on application

REPRESENTED BY: